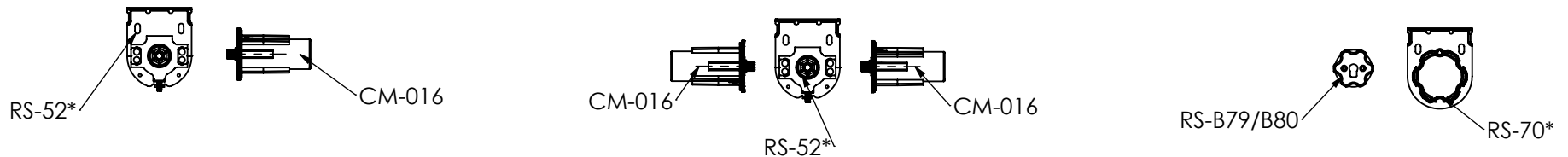
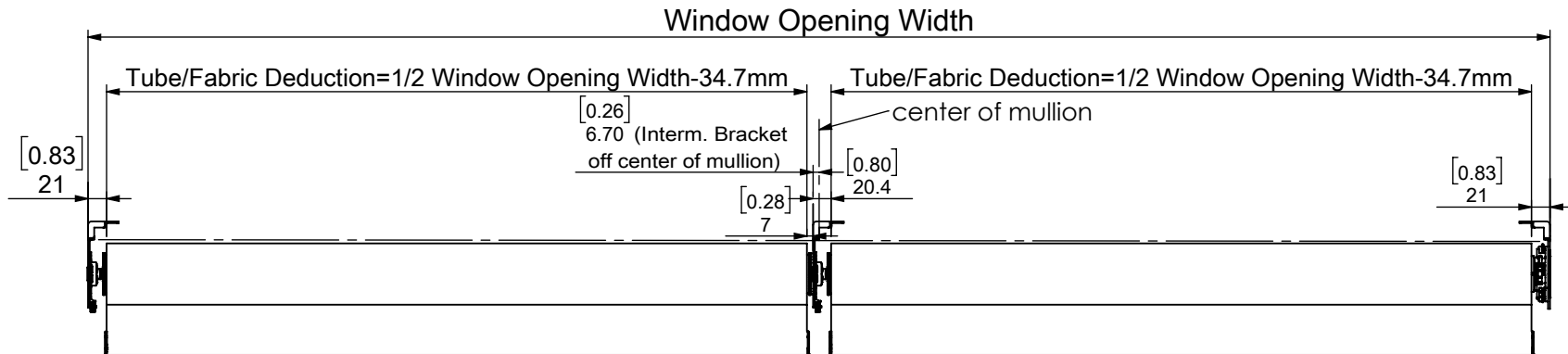
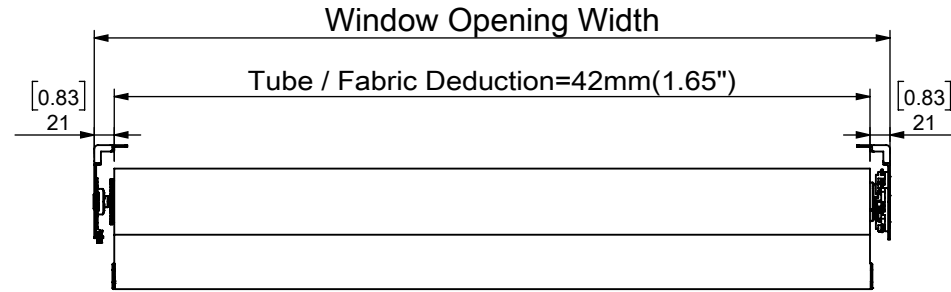


2.37" Proj. Open Roll System Tube And Fabric Deduction (W/O End Cap)

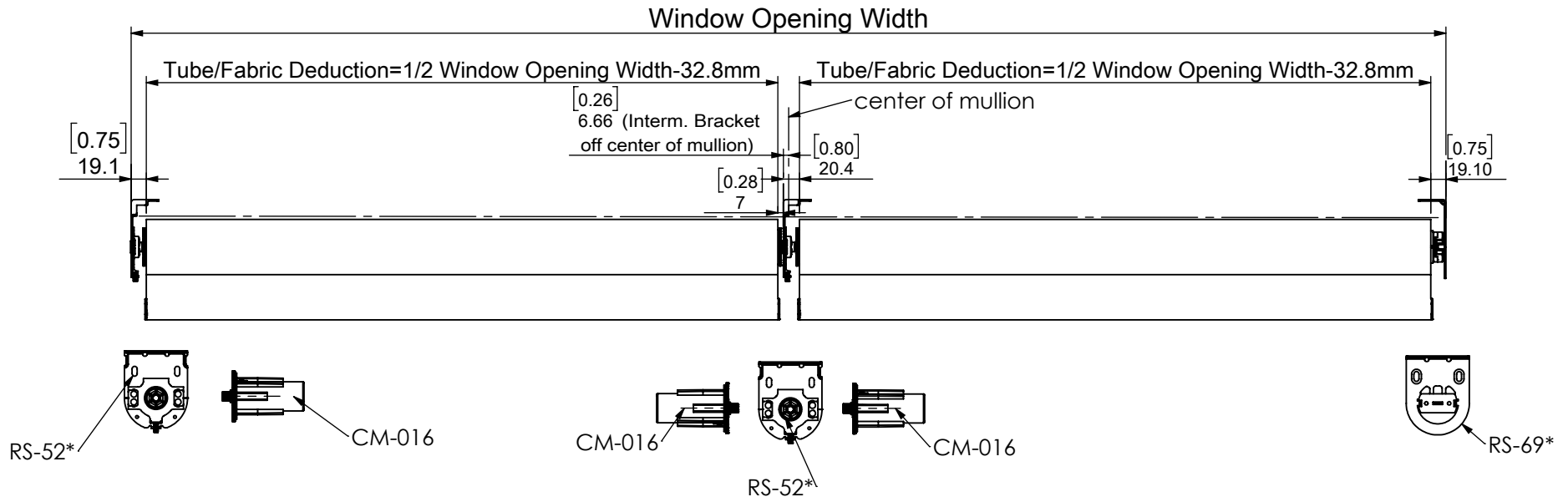
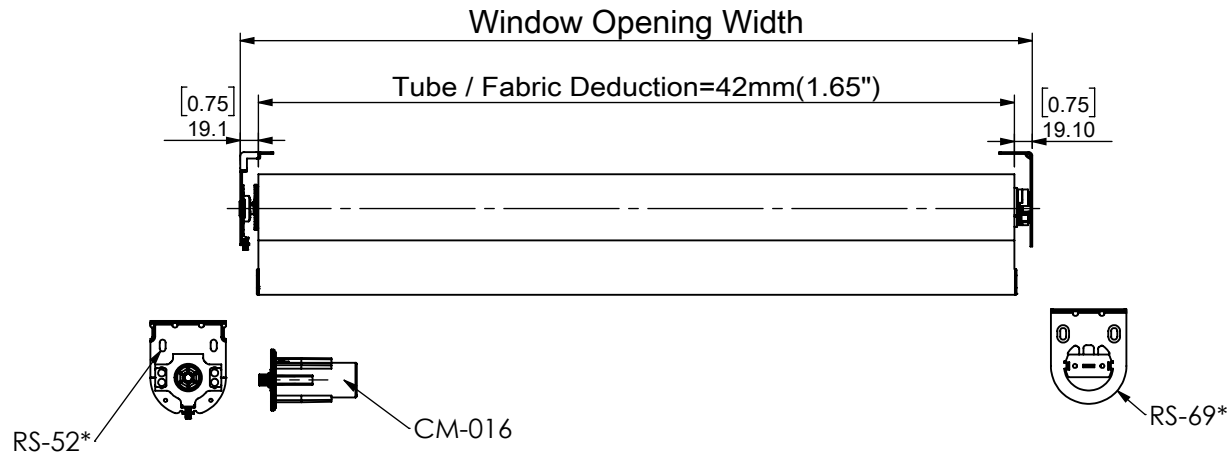
For Somfy 400 Motor With Star Head Adapter, 1.5" Retractable Coupler and 1.5" Retractable Idler



- Note:
1. Use this chart as a guideline only.
 2. Deduction with 1-2mm tolerance.
 3. End Cap thickness is 1.8mm.

2.37" Proj. Open Roll System Tube And Fabric Deduction (W/O End Cap)

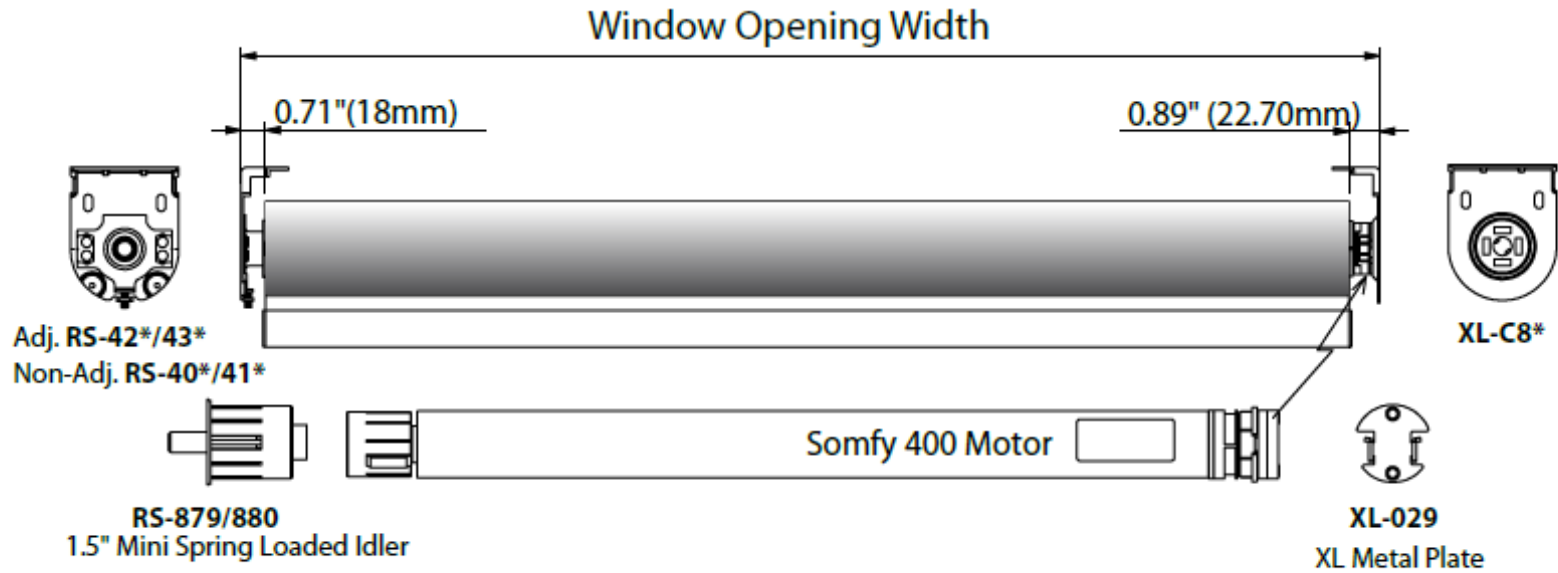
For Somfy 400 Motor With Metal Slice Adapter, 1.5" Retractable Coupler and 1.5" Retractable Idler



- Note:
1. Use this chart as a guideline only.
 2. Deduction with 1-2mm tolerance.
 3. End Cap thickness is 1.8mm.

Motor Application

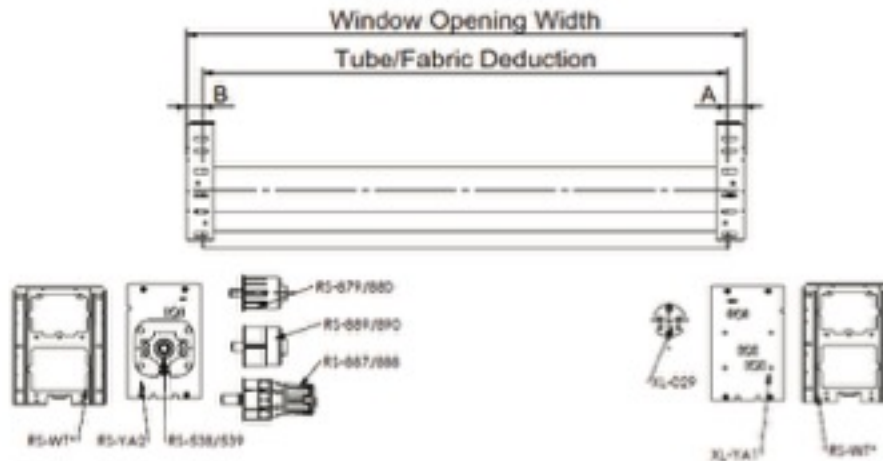
with Somfy 400 Motor, 1.5" Mini Spring Loaded Idler and 1.5" Groove Motor Tube



TUBE AND FABRIC DEDUCTION

7" Fascia System Tube And Fabric Deduction (W/O End Cap)




Single Roll For Somfy 400 Motor with 7" XL Insert Plate and Spring Loaded Idler



Spring Loaded Idler End Option			RS-879/880			RS-889/890			RS-887/888		
Tube	Crown	Unit	Light Gap		Deduc.	Light Gap		Deduc.	Light Gap		Deduc.
			A	B	d(=A+B)	A	B	d(=A+B)	A	B	d(=A+B)
RS-032 1.5" Groove Tube	RS-B41	in	1.03	1.03	2.06	N/A			N/A		
		mm	26.1	26.1	52.2						
RS-013 2" Groove Tube	9013763A (Somfy)	in	N/A			1.05	1.05	2.1	N/A		
		mm				26.6	26.6	53.2			
RS-033 2 3/8" Tube	9013763A+RS-975	in	N/A			N/A			1.11	1.11	2.21
		mm							28.1	28.1	56.2
RS-T65 2 1/2" Tube	9013763A+RS-984	in	N/A			N/A			1.14	1.14	2.28
		mm							29.0	29.0	58.0

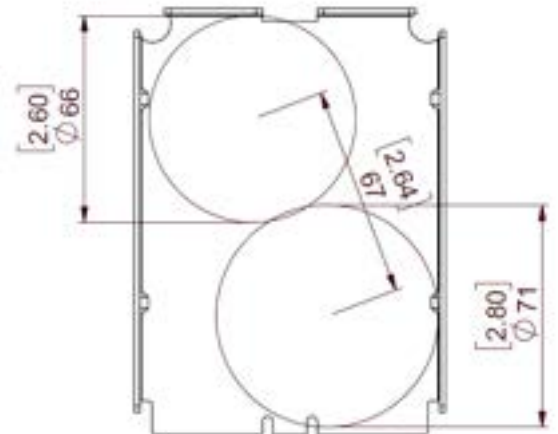
- Note: 1. Use this chart as a guideline only.
2. Deduction with 1-2mm tolerance.
3. End cap thickness 1.6mm.

5.5" L Fascia Slim Shade Maximum Drop

Tube		Upper roller Blackout, (0.55mm Thick)	Lower roller Sun-Screen 3%, (0.91mm Thick)
1 1/8" Tube		3.3m/11 ft	3.3m/11 ft
1 1/4" Tube		3m/10 ft	3m/10 ft
1 1/2" Tube		2.4m/8 ft	2.4m/8 ft

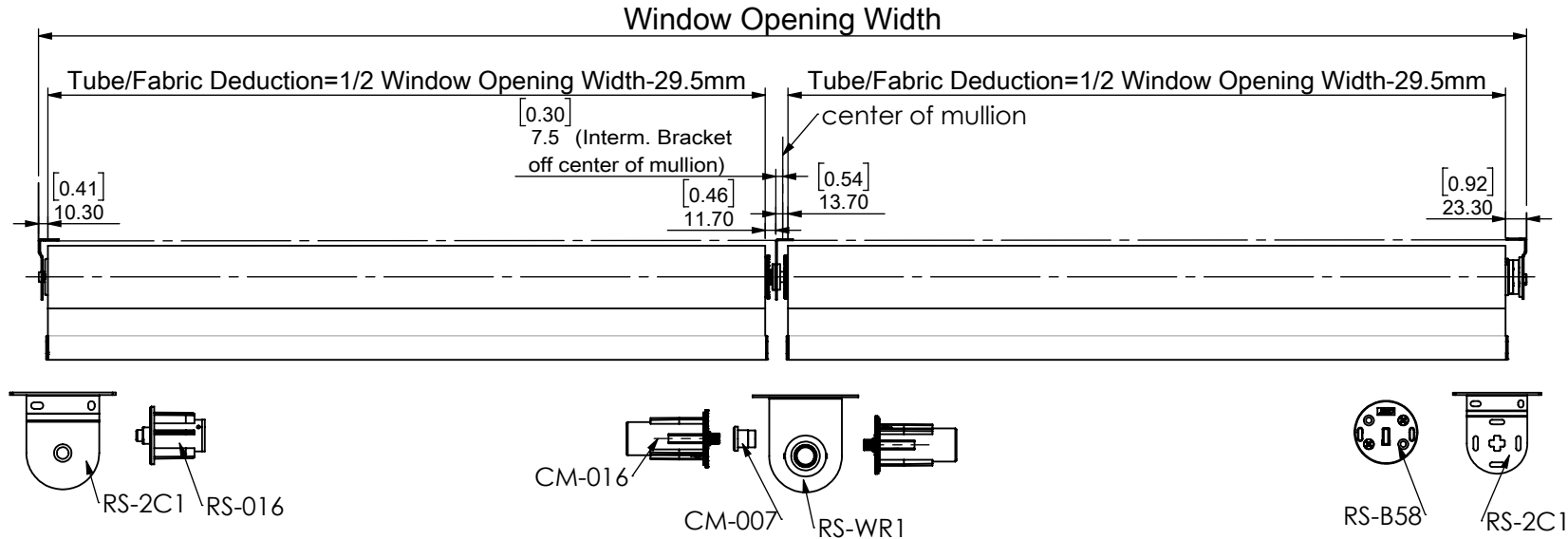
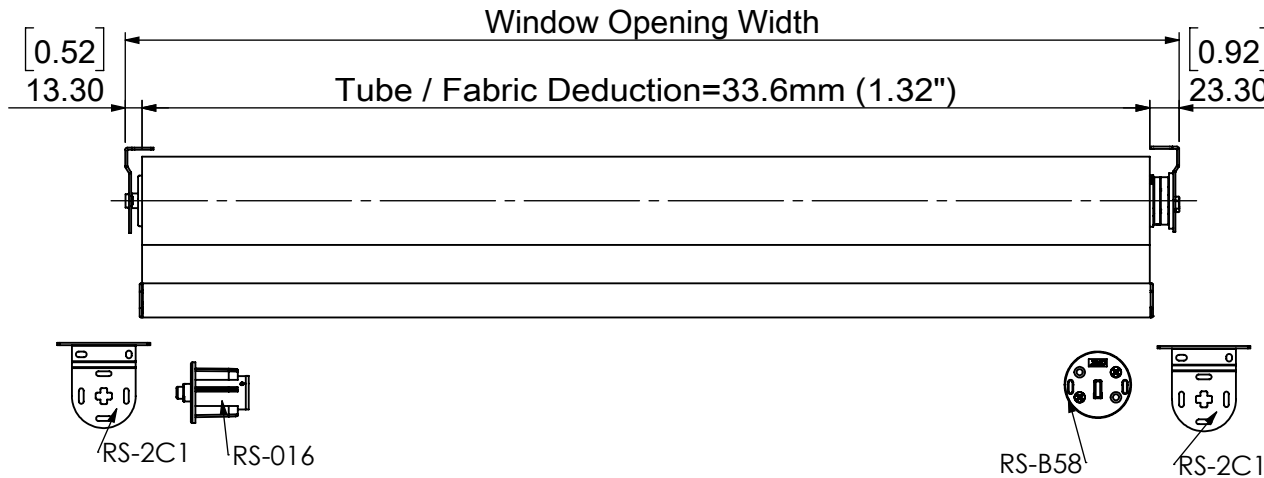
Roller Maximum diameter

- 1) Upper roller maximum diameter can reach 66mm (2.6").
- 2) Lower roller maximum diameter can reach 71mm (2.8").
- 3) Distance of two roller centre is 67 mm (2.64").



Normal Open Roll Bracket System Tube And Fabric Deduction (W/O End Cap)

For Somfy 400 Motor with RS Motor Adapter, 1.5" Retractable Coupler and 8mm Spring Idler



- Note:
1. Use this chart as a guideline only.
 2. Deduction with 1-2mm tolerance.
 3. End Cap thickness is 2.2 mm.

Somfy 400 Motor Tube and Fabric Deduction

for 4" Fascia Bracket using CM-016 with Metal Plate Adaptor

